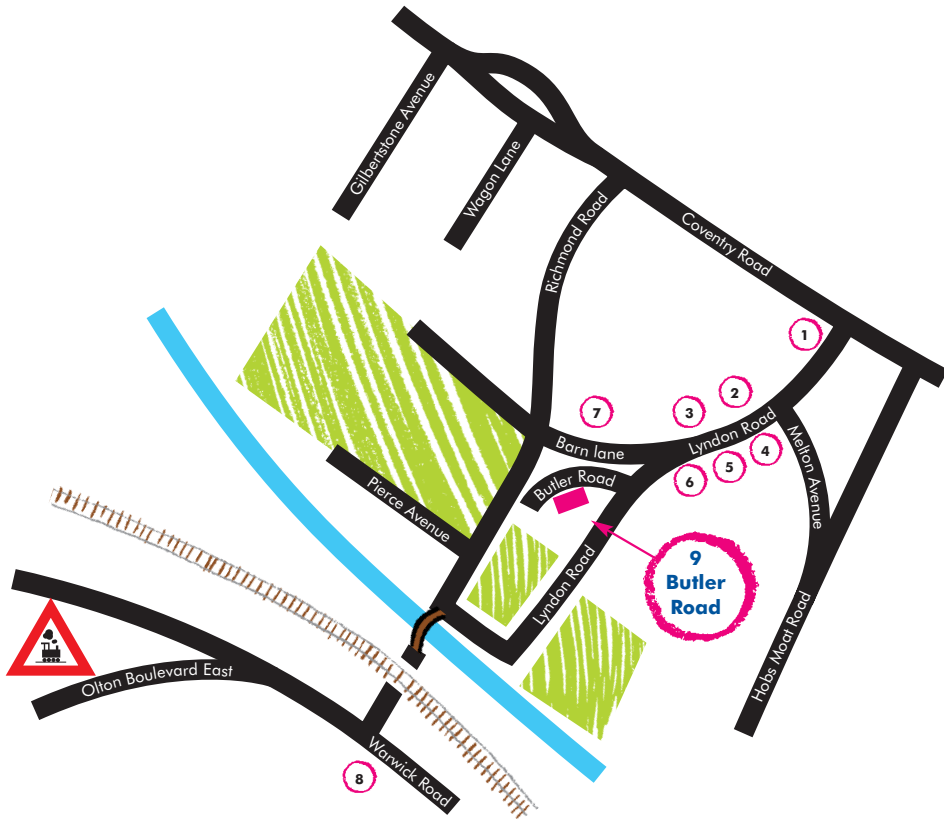


## LOCAL AMENITIES



- |                 |                           |
|-----------------|---------------------------|
| 1 Tesco         | 5 Hair Salon              |
| 2 Hair Dressers | 6 Florist                 |
| 3 Spar          | 7 The Lyndon Public House |
| 4 Chip Shop     | 8 Library                 |



magic properties

'for accommodation with that magical touch'



### Executive House Share SOLIHULL

9 Butler Road  
Olton  
Solihull  
B92 7QL



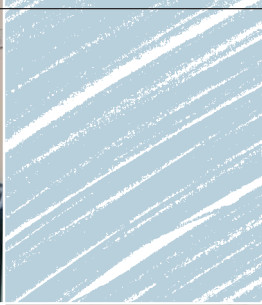
magic properties

'for accommodation with that magical touch'

† 07920 499113

e info@magicproperties.co.uk

w www.magicproperties.co.uk



## 9 Butler Road

Stylish accommodation for young professionals in a quiet cul-de-sac location.

Affordability and accessibility have never made so much sense, because 9 Butler Road has got both in abundance

So, take stock of the home that is as individual as you are - which benefits from features to make your busy life a whole lot easier

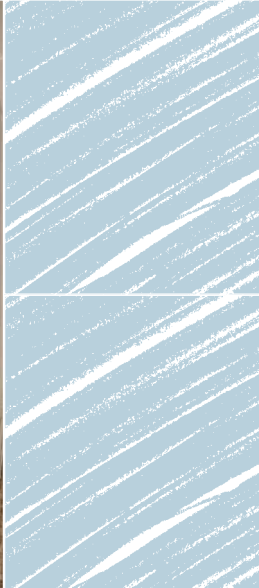
Situated near the beginning of Butler Road and benefiting from no through traffic

The emphasis is on a room for the young professional and 9 Butler Road has a house share facility for 6 people

Excellent value for money in a stunning house and idyllic location!

The house is situated on a lovely, quiet, cul-de-sac only 10 minutes walk from Olton Railway Station. The property benefits from its close proximity to all the local and city amenities

Turn space into your place ... with Magic Properties

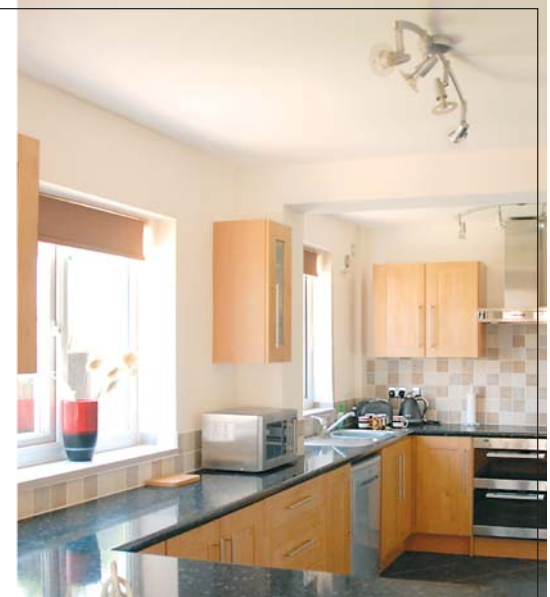


## AMENITIES

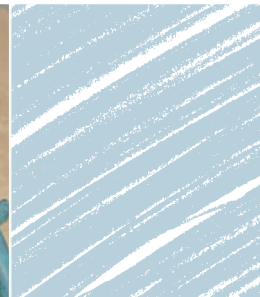
An amazing opportunity especially for people new to Solihull and Birmingham who want a great safe place to live

Prices are FULLY INCLUSIVE OF ALL BILLS AND you also get

- Fully furnished house including TV, DVD and Freeview digital services
- Large kitchen/diner - fully integrated appliances - dishwasher, fridge/freezer, electric oven and microwave
- Utility - washing machine and dryer
- Bedrooms with orthopaedic mattress, wardrobe, drawers, bedside cabinets, easy chair and side table
- Comfy Lounge
- Garden with patio area, table & chairs
- 6 en-suite bedrooms and cloakroom
- All cookware & appliances provided
- Weekly maid cleaning service to common areas
- A diverse group of young professional house-mates
- A large maintained garden
- Parking for up to six cars
- All bills paid including council tax, gas and electricity



We strive for and expect the best, just like you



## TRAVEL INFO

Olton train station is within 10 minutes walk with a journey time into Solihull of 5 minutes and the City Centre within 8 minutes. The M6, M40 & M42 are less than 8 minutes drive away, with the NEC, Birmingham Airport and Birmingham International only 5 minutes drive

Unbeatable location with bus stops right around the corner for all main bus routes (numbers 38, 41 & 41c) into Solihull & Birmingham City Centre

